

# Year Four: Drawing

## Knowledge Organiser



### The Big Idea

Claude Monet achieved fame for being the initiator, leader and unswerving advocate of the impressionist style. We can use pencil to create pattern and texture in finer detail over larger areas.

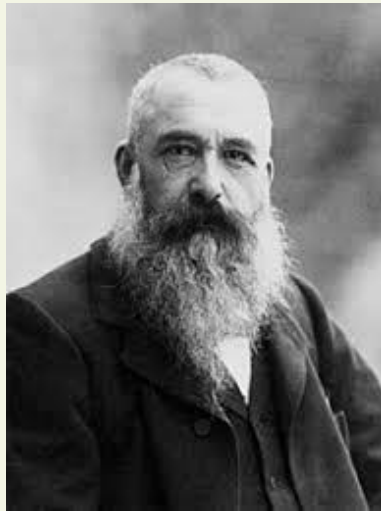
### Vocabulary

purpose

detail

tone

### Research the Artist



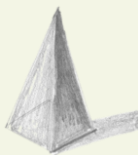
**Claude Monet**  
Impressionist Artist

- Claude Monet was born on 14th November 1840 in Paris, France.
- Monet suffered with cataracts. In 1923, he had surgery to remove them from his eyes. The works he painted when he had cataracts are more red than the ones he painted after his operation.
- Claude Monet was the founder of the impressionist movement.
- Paintings by Claude Monet now sell for tens of millions of pounds. He produced more than 1000 individual paintings during his career. He is probably most well-known for his series of paintings of water lillies.

### Shape Drawing

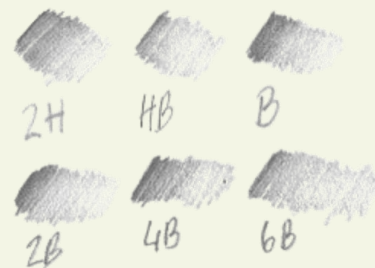


I can draw these shapes freehand.



Tone is the relative scale of light to dark values in an image. It is vital to creating depth and solidity in a drawing or painting.

### Pencil Gradients



A B grade pencil means the core has more graphite, and will make a bolder, darker line, and also be a little smudgier than a light pencil.

An H grade pencil means the core has more clay, and will make a lighter, finer line, and will be less smudgy than a dark pencil.