



# RED LANE ROUND UP

## December 2024

What a busy and brilliant half term we have had. Laura from Bright Leaders has continued to work with our Year 4 pupils; recently producing podcasts and raising money for new outdoor equipment by selling wristbands. Thank you for your continued support in helping our pupils to achieve their aims.



Please take note of the upcoming dates for the upcoming festive period.

*Mrs Driver*

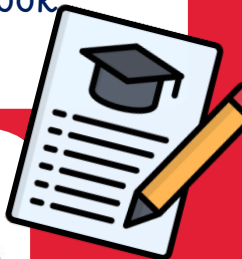
## Online Safety



Please keep up to date with top tips to keep your child safe using the internet by viewing the dedicated online safety page on our website.  
<https://www.red-lane.bolton.sch.uk/parents/online-safety/>

## Did you know?

Our website has a devoted page for parents, but you will also find policies and information about our curriculum on there too! We encourage you to take a look around!



## Early Birds and Night Owls

To book in for Early Birds and Night Owls please call Mrs Cornick on 01204 333580 Extension 302.

Early Birds 7.30am - 8.40am £5.50

Night Owls 3.30pm - 6pm £8



# Ian Bland Poetry Workshops



In Red Lane, we are working really hard to increase pupil's love of Reading.

On the 11<sup>th</sup> & 12<sup>th</sup> November, we invited poet, Ian Bland, to our school to run some poetry workshops for each year group. On Monday he worked with Key Stage 2, starting with an assembly in the morning, where he read some fantastic poems! He then worked with each year group to write a poem in small groups. Ian had a great sense of humour and the children loved this and were very engaged in their exciting day.

On Tuesday, he worked with Key Stage 1, and the day followed a similar pattern. Key Stage one also found this to be a creative and fun experience. Ian ran a parent workshop after school on Tuesday, where some children were able to write a poem with their parents. If you would like to read some of his poems with your child, or have a look at his poetry books, you can visit his website: <https://www.ianbland.com/>

*Our Reading leads are Miss Simpson and Miss Spencer.*

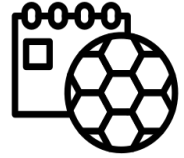




# Red Lane FC



Competition: Key PE Sports League D



Scan here  
for league  
tables and  
fixtures!



Another fantastic effort by Red Lane FC on 12<sup>th</sup> November, under the floodlights at Ladybridge!

We won one and lost one but the boys represented the school wonderfully. Keep up the excellent effort!

*Our PE lead is Mr Nicholson.*

# Inclusion Coffee Morning

What is it?

RED LANE  
PRIMARY SCHOOL



BELIEVE • ACHIEVE • SUCCEED

**Inclusion Coffee  
Morning**



**Wednesday  
4th December 2024  
at 9am**



Would you like to find out more about the provision and support that is in place for our children with Special Educational Needs and Disabilities (SEND) and those with other needs?

Come and meet the school's Inclusion Team, while you have a cup of tea or a coffee. Please take this opportunity to ask any questions that you have, and look at some of the resources we use to support the children with additional needs.

*Our inclusion team includes Mr Hudson, Mrs Healey, Mrs Beswick, Mrs Gregory and Miss Regan*



# Spotlight on Music

During our weekly music lessons we focus on understanding how music is created and allow the children to explore this concept. This term, all pupils have been learning about **pitch**; the melody and the way the notes change, as well as **pulse**; the steady beat of a piece of music.

With an array of special musical performances planned for the upcoming festive season, we have been focusing on how to enhance our performance with expression. Additionally, the children are given opportunities to evaluate their own performances, this allows them to focus on what went well and what they can improve on.

Over the course of the year each class studies a composer, which allows them to explore musical history as well as enhancing a love of music. This term Year 2 are exploring the music of Pyotr Ilyich Tchaikovsky. He is a Russian composer perhaps more famously known for composing The Nutcracker. The Nutcracker is a beautiful ballet set on Christmas Eve at the foot of a Christmas tree, taking place in a child's imagination. As a family you can enjoy an easy watch version on BBC iPlayer.

*Our Music leads are Mrs France and Mrs Behan*



## Competition Time!

In celebration of this wonderful Christmas ballet composed by Tchaikovsky we are giving **2 children the chance to win their very own musical Nutcracker story book.** Design sheets are available from class teachers and entries must be in by **Friday 13th December.**





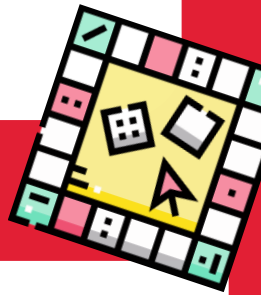
# Learn with your child session Maths

On Tuesday 26<sup>th</sup> November, Mrs Behan hosted a 'Learn with your child session' with a focus on Maths for Early Years and Key Stage 1. Mrs Behan shared our how we teach early Maths in school, and how important it is that our children know and remember number facts from an early age. Parents and their children played games that encouraged counting forwards and backwards, adding small numbers quickly and recognising small amounts without counting (called subitising).

Our next workshop is for KS2 parents and children on Tuesday 3<sup>rd</sup> December at 9am.  
Book your place with your child's teacher.

*Our Maths leads are Mrs Behan and Miss Taylor*

## How can I help at home?



### Play Numbots

At Red Lane, we pay for pupils access to Numbots at home. Numbots helps children to practise addition and subtraction and goes at their pace. Use your child's Purple Mash log in to access at <https://play.numbots.com/#/account/school-login/22516>

### Play board games

Board games and dot-to-dots are brilliant for practising number recognition and counting on and back.

### White Rose videos

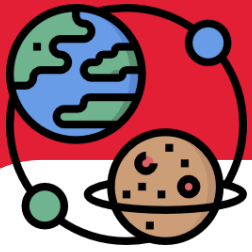
Please access White Rose Home Learning page for age and topic specific videos.

<https://whiteroseeducation.com/parent-pupil-resources/maths/home-learning>

### White Rose packs

Please let us know if you would additional practice packs to do at home. We can print them for you!





# Spotlight on Science

We know that children at Red Lane love science and, so far this year, there has been lots going on. The first half term saw lots of looking children at the weather and the changing seasons in our school grounds as well as autumn walks for our early years and key stage one children to give the opportunity to explore the changing seasons. This half term, we have lots of different topics across school from sound to space and materials to electricity. Our children have been learning about, researching and investigating all sorts of things!

*Our Science lead is Mr Charlton.*



## Try this out at home!

### Lava Lamps

You can create a lava lamp with things you might already have at home. All you need is a plastic bottle, some cooking oil, food colouring and a fizzing tablet (e.g Alka Seltzer or Berocca) - use a torch to make it glow!



### Autumn to Winter

As we move into a new season, take a walk and talk to your child about the changes you see. Look for bare branches, berries and birds..



### Cold Weather Crafts

#### Look up!

Darker evenings make a great opportunity look up and see the moon, stars and even a planet or two! Year 5 are making moon diaries to see how the moon changes, why not join in and create one too!

Cold and wet weather often means more time indoors. Why not use this opportunity to get creative and make bird-feeders, models or even Christmas decorations. Talk to your child about which material is best to use and why.



# Attendance

## Attendance

Children need to attend school regularly to benefit from their education. Missing out on lessons leaves children vulnerable to falling behind. Children with poor attendance tend to achieve less in primary and secondary school. Missing school has a huge impact on how well a pupil gets on at school. The more school a child misses, the harder it is for them to get into a routine of attending regularly and catch up on the work they have missed. Missing school can also leave a child more open to becoming involved in crime, either as an offender or as a victim. Research shows that a year 11 pupil who has missed 17 days during the school year may get one grade less than they would have achieved had they attended regularly. A few days of absence could have a huge impact on a child's future opportunities.



## Medical Appointments

If it is possible, any appointment should be made out of school time. If this is not possible, your child should miss the minimum amount of school time necessary. If your child is well enough to go back to school following the appointment, they should do so. Evidence of the medical appointment should be provided to the school ahead of the appointment date.

## Current class attendance

Rec J	89.4%	Rec W	92.8
1M	91.4%	1S	93.1%
2B	92.1%	2F	96%
3I	93.6%	3T	94.1%
4B	91.9%	4N	90.3%
5C	95.9%	5W	92.8%
6H	91.6%	6S	95.7%



# Attendance

With the winter season approaching, please can parents be aware of the time off needed for certain illnesses and abide by the guidance when your child is ill to help stop the spread.

## Do I need to keep my child off school?

HSC Public Health Agency

<b>Chicken Pox</b> Until all spots have crusted over	<b>Conjunctivitis</b> No need to stay off but school or nursery should be informed	<b>Diarrhoea &amp; Vomiting</b> 48 hours from last episode	<b>Glandular Fever</b> No need to stay off but school or nursery should be informed	<b>Hand, foot &amp; mouth</b> No need to stay off but school or nursery should be informed	<b>Impetigo</b> Until lesions are crusted & healed or 48 Hours after commencing antibiotics
<b>Measles or German Measles</b> 4 days from onset of rash	<b>Mumps</b> 5 days from onset of swelling	<b>Scabies</b> Until after first treatment	<b>Scarlet Fever</b> 24 hours after commencing antibiotics	<b>Slapped Cheek</b> No need to stay off but school or nursery should be informed	<b>Whooping Cough</b> 48 Hours after commencing antibiotics
<b>Flu</b> Until recovered	<b>Head Lice</b> No need to stay off but school or nursery should be informed	<b>Threadworms</b> No need to stay off but school or nursery should be informed	<b>Tonsillitis</b> No need to stay off but school or nursery should be informed		

**Our current attendance level is: 93%**

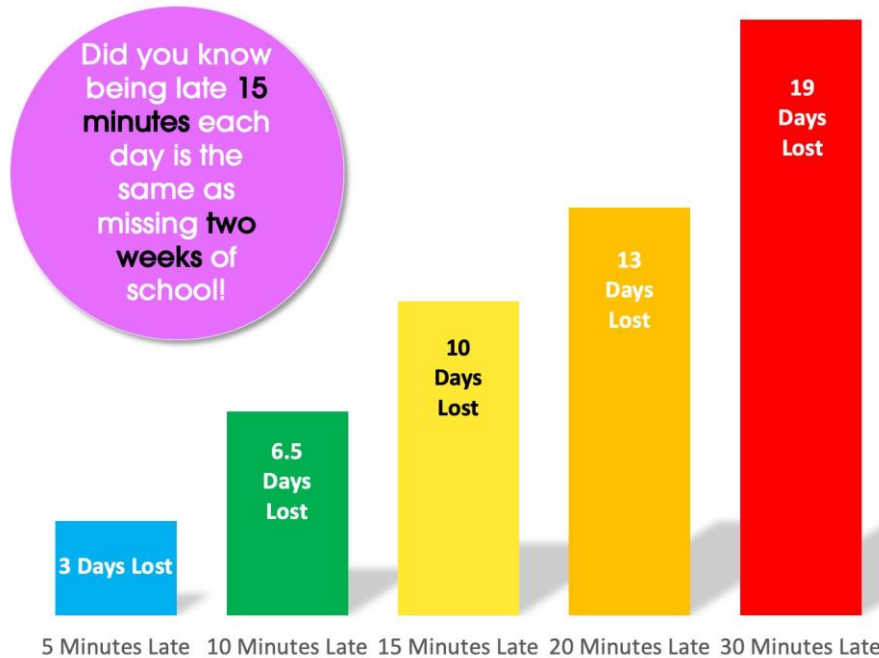
This is below the expected level of attendance.

As a school our attendance levels are recovering from a bout of winter illness. As we move into the next half term, please ensure your children are in school and on time.

# Punctuality

## Punctuality Matters!

Lost Minutes = Lost Learning



## Punctuality

Thank you for your work on improving attendance. It is important that your children arrive on time to maximise their learning. From the moment they arrive, teachers are on hand to support pupils with reading, writing and maths work.

## ATTENDANCE MATTERS!

When you're in school you...



Have the best possible start in life!



2024



# december

Sun

Mon

Tue

Wed

Thu

Fri

Sat

1

2

3

KS2 Maths  
Parent  
workshop  
9am  
  
Rec J  
Nativity  
2.30pm

4

Inclusion  
coffee morning  
9am  
  
Nursery  
singalong  
11.45am &  
3pm

5

Rec W  
Nativity  
2.30pm

6

Non-  
uniform  
day  
(chocolate  
and  
sweets for  
fair)

7

8

9

10

2F & 1M  
Nativity  
2.30pm  
&  
5.30pm

11

2B & 1S  
Nativity  
2.30pm  
&  
5.30pm

12

Christmas  
Jumper  
day  
  
Christmas  
Fair  
3.45pm &  
5pm

13

14

15

16

KS1  
Christmas  
dinner &  
crafts

17

KS2  
Christmas  
dinner &  
crafts

18

Y3/4  
Christmas  
Service  
1.30pm  
  
EY&KS1 disco  
3.30pm  
KS2 disco  
4.45pm

19

Y5/6  
Christmas  
Service  
1.30pm

20

Party day  
& school  
closes at  
1.30pm

21



# MERRY & BRIGHT

